

**Low Absorbency Base Coats** Designed to function as a primer and a low absorbency base paint all in one. The Base Coat comes in two tint bases, a pastel and a deep tone for achieving dark colors. It dries to an eggshell sheen.

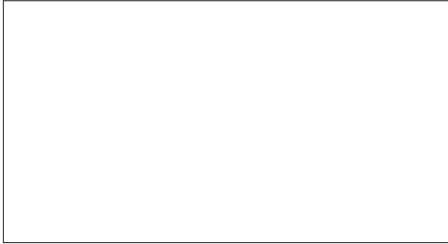


Pastel Base



Deep Tone Base

## Painting & Glazing Mediums



### Smooth Transparent Glazing Gel

Creates the look of traditional waxed finishes as well as smooth, hard, transparent layers of color if tinted.



### Full-Bodied Painting & Glazing Medium

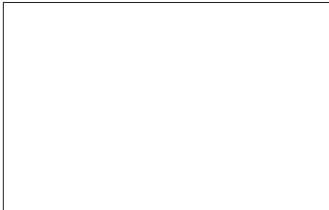
Sets up to a thicker consistency when left undisturbed, and is less likely to drip and run from application tools when working on broad wall and ceiling applications.



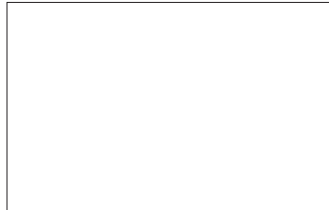
### Low Viscosity Painting & Glazing Medium

Formulated at a thinner "at rest" consistency and is more "oil-like."

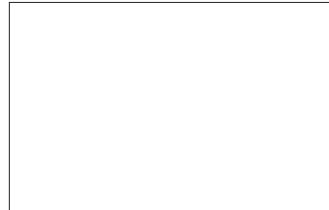
**Metallic Mediums** Iridescent acrylic mediums highly pigmented with mica pigments to produce strong metallic effects. Tintable with Pigment Dispersions or Slow-Drying Fluids.



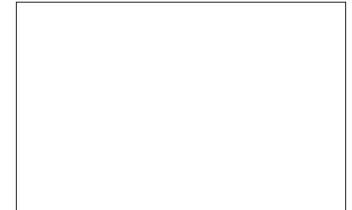
Pearl



Gold



Copper



Bronze

## Crackle Textures



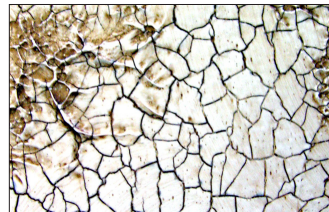
### Cracking Size

A clear cracking size that augments the cracking effects of Proceed Cracking Textures and Cracking Glaze.



### Transparent Cracking Glaze

A single - step, clear cracking glaze that generates a transparent porcelain crackle patina.



### Smooth Cracking Texture

A single - step, trowelable smooth texture that generates a geometric "mudcrack" crackle pattern.



### Rough Cracking Texture

A single - step, trowelable rough texture that generates an organic irregular cracking pattern.

For technical information visit [proceedsystem.com](http://proceedsystem.com)

**Proceed**<sup>®</sup>  
PROFESSIONAL DECORATIVE PAINTING SYSTEM

Proceed<sup>®</sup> Professional Decorative Painting System

An acrylic painting and glazing system designed to give the professional decorative painter control of color, sheen and transparency. This product and system has been classified in the PDPA medium classification project. For more information on this project please contact the Professional Decorative Painters Association. <http://www.pdpa.org>

MANUFACTURED BY  
**GOLDEN**  
ARTIST COLORS<sup>®</sup>